

# Activities in Other UASI Jurisdictions

*-Tales from a Working Tourist*

San Francisco Bay Area UASI  
Approval Authority

March 13, 2014





# Travel = Exposure

1. Capabilities Sustainment
2. Regional Integration
3. Evolving Threats
4. Procurement
5. Noteworthy Capabilities



# Metro Atlanta UASI









1. The first step in the process is to identify the areas at risk of storm surge. This is done by analyzing the location of the coastline and the depth of the water. Areas that are low-lying and close to the water are at the highest risk.

2. The next step is to determine the potential surge height. This is done by using historical data and computer models. The surge height is the maximum height of the water above the normal tide level.

3. The final step is to calculate the potential damage. This is done by comparing the surge height to the elevation of the land. Areas that are below the surge height are at risk of flooding.

4. The final step is to create a map of the risk areas. This map shows the areas that are at risk of flooding and the potential surge height.

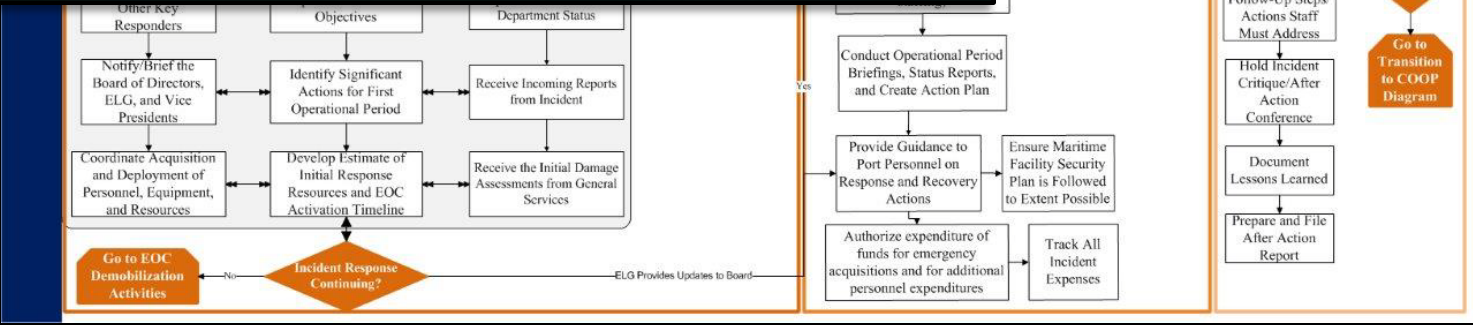




# PROCUREMENT









Christopher Godley, CEM  
Director of Emergency Management  
858-775-6132  
[christopher.a.godley@leidos.com](mailto:christopher.a.godley@leidos.com)



