



[JURISDICTION] CATASTROPHIC INCIDENT MASS FATALITY PLAN WORKSHOP

[DATE]

[Jurisdiction
Logo (insert on
slide master)]



OPENING, INTRODUCTIONS, & OVERVIEW

[Jurisdiction
Logo (insert on
slide master)]

WELCOME AND HOUSEKEEPING

- Sign In, Workshop Materials
- Restrooms
- Silence cell phones
- Emergencies
- Breaks



INTRODUCTIONS

- Facilitators
- Participants



WORKSHOP SCHEDULE

[Date]

9:30 – 9:45	Registration
9:45 – 10:00	Introduction
10:00 – 10:30	Module 1: Plan Overview
10:30 – 12:00	Module 2: Objectives 1 to 4
10:30 – 10:55	Objective 1: Roles and Responsibilities
10:55 – 11:15	Objective 2: Coordination and Communication
11:15 – 11:40	Objective 3: Integration of Resources
11:40 – 12:00	Objective 4: Operations
12:00 – 12:30	Working Lunch
12:30 – 1:30	Module 3: Objective 5 - CBRNE
1:30 – 2:30	Module 4: Objective 6 - Influenza Pandemic
2:30 – 3:00	Module 5: Review and Findings
3:00 – 3:15	Participant Feedback



WORKSHOP MANUAL

[insert image of Workshop Manual
Cover]



WORKSHOP PURPOSE

- Conduct a systematic review of the [Jurisdiction] Catastrophic Incident Mass Fatality Plan .



WORKSHOP PURPOSE (CONT.)

- To familiarize workshop participants with critical elements discussed in the [Jurisdiction] Mass Fatality Plan
- To review and/or evaluate critical elements and concepts presented in the Plan
- To identify gaps and areas for improvement for Plan revisions and future planning efforts



WORKSHOP SCOPE

- The workshop will be based on the response to three (3) scenarios:
 - **Earthquake:** 7.9M earthquake on the northern segment of the San Andreas
 - **CBRNE:** Chemical agent (chlorine) release by an Improvised Explosive Device detonation at a water treatment plant
 - **Influenza Pandemic:** 1918-like influenza pandemic, which considers a 2.0 percent mortality rate



WORKSHOP OBJECTIVES

1. Evaluate the roles and responsibilities identified in the Plan and verify that the list is accurate and inclusive of all agencies relevant for mass fatality response operations in a catastrophic incident.
2. Evaluate the methods described for coordination and communication with local governments, regional, State, and Federal government agencies.
3. Evaluate the process described in the Plan for integrating local, State, and Federal resources into the area.



WORKSHOP OBJECTIVES (CONT.)

4. Evaluate that the operations section of the Plan is effective at accurately describing all the critical issues relevant to the Plan
5. Evaluate the roles and responsibilities as well as operations related to the CBRNE scenario.
6. Evaluate the roles and responsibilities as well as operations related to the influenza pandemic scenario



WORKSHOP STRUCTURE

- Workshop will be an interactive, facilitated discussion, organized by modules
- Modules will not be presented chronologically to mirror the scenario event; rather, they will support objectives formulated to verify accuracy and consistency of the Plan and the operational elements necessary to carry out mass fatality operations
- Participants will be introduced to Objectives and Discussion Points that support those objectives and will be asked to respond to facilitated questions



WORKSHOP GUIDELINES

- Primary goal of the workshop forum is to ensure that the coordination, resource-requesting and decision-making processes are accurately described
- Emphasis is on identifying potential inaccuracies or gaps and resolving them through discussion
- Developing solutions should be the focus
- Participation based on knowledge of existing plans and capabilities, and insights is encouraged



WORKSHOP GUIDELINES (CONT.)

- Decisions are not precedent-setting; the workshop is an opportunity to present and discuss multiple options and possible solutions
- Support from other responders and agencies is assumed
- Scenario, objectives, and assumptions serve as the basis for discussion
- Goal is to review elements of the plans, not to validate the scenario or the HAZUS estimates





MODULE 1: OVERVIEW OF THE [**JURISDICTION**] CATASTROPHIC INCIDENT MASS FATALITY PLAN

[Jurisdiction
Logo (insert on
slide master)]

PLAN OVERVIEW

- The Plan provides operational details for:
 - Notification
 - Scene evaluation and organization
 - Recovery of remains
 - Fatality collection points
 - Transportation and temporary storage
 - Morgue operations
 - Family Assistance Center (FAC) operations
 - Final disposition
 - Demobilization

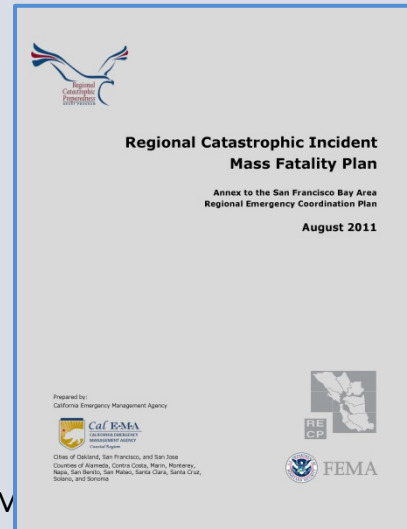
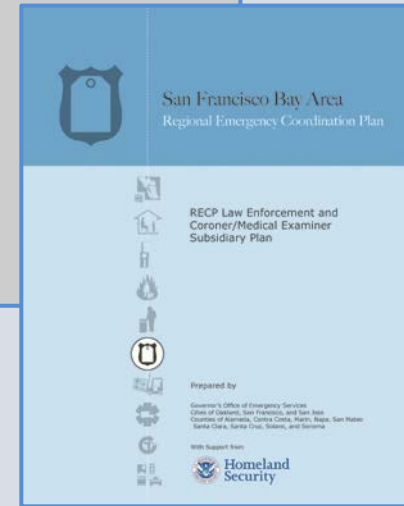
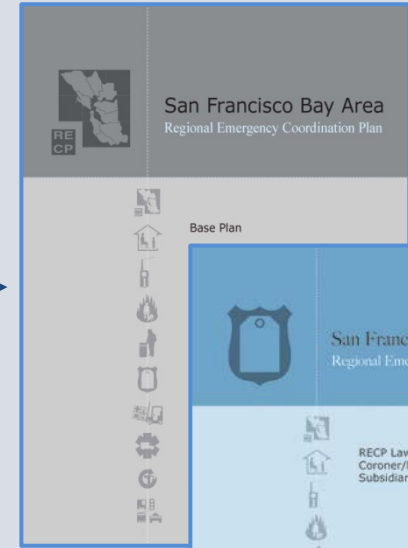
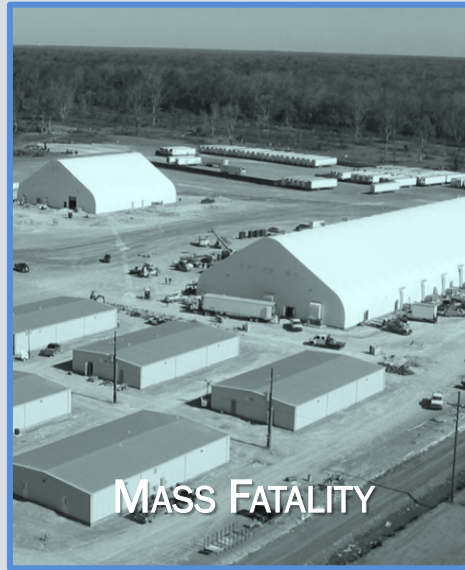
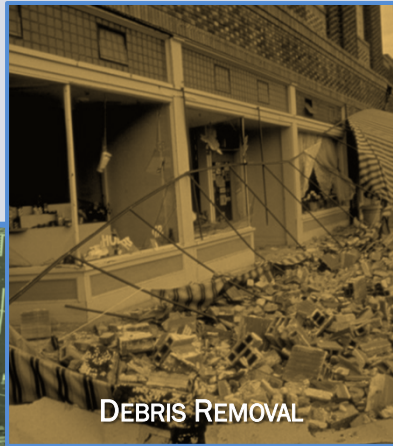


PLAN STRUCTURE

- **Main Body:** Presents the core planning principles and operational elements for mass fatality operations in the response to the earthquake.
- **Appendix A:** Acronyms and Glossary
- **Appendix B:** Maps
- **Appendix C:** Critical Information Requirements
- **Appendix D:** Operational Checklists and other Tools
- **Appendix E:** CBRNE Scenario Event
- **Appendix F:** Influenza Pandemic Scenario Event
- **Appendix G:** Comparison of Normal and Altered Standards of Death Care



PLAN RELATIONSHIPS



[JURISDICTION – UPDATE ON MASTER SLIDE] M

CATASTROPHIC EARTHQUAKE SCENARIO

- The plan is based on a catastrophic earthquake scenario
- The scenario used for planning purposes is a recurrence of the 1906 moment magnitude (**M**) 7.9 earthquake on the northern segment of the San Andreas fault.



EARTHQUAKE CHARACTERISTICS

- Main shock lasts 45 to 60 seconds
- Epicenter is just outside the entrance to the San Francisco Bay, west of the Golden Gate Bridge
- Earthquake ruptures approximately 300 miles of the northern segment of the San Andreas Fault
- Threats and hazards resulting from the main shock are aggravated or recur during aftershocks, which continue for months after the main shock



REGIONAL IMPACTS

- 300,000 people seeking shelter
- 500,000 households without electricity
- 1.8 million households without potable water
- 7,000 fatalities
- 50 million tons of debris
- More than 1 million people requiring transportation assistance because of hazardous conditions or dislocation



REGIONAL IMPACTS (CONT.)

- Threats and hazards resulting from shaking, surface fault rupture, and liquefaction include:
 - Structural and nonstructural damage to buildings and infrastructure
 - Widespread fires
 - Subsidence and loss of soil-bearing capacity
 - Displacement along the San Andreas Fault
 - Widespread landslides
 - Hazardous materials spills and incidents
 - Dam/levee failure, resulting in flooding
 - Civil disorder



CBRNE SCENARIO

- [insert scenario information specific to your jurisdiction. Describe the scenario and the impacts]



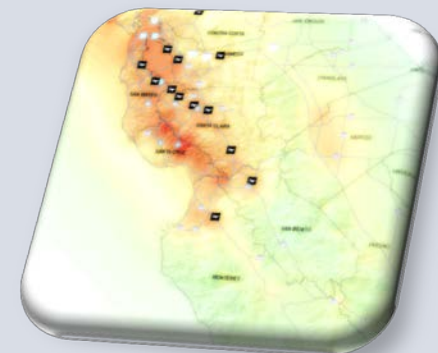
INFLUENZA PANDEMIC SCENARIO

- Category 5 influenza pandemic
 - Case-fatality ratio of 2% or higher¹
- Lasts from 9 to 10 months
- [add additional scenario information specific to your jurisdiction]



MASS FATALITY ASSUMPTIONS – EARTHQUAKE SCENARIO

[Enter the assumptions identified in your Mass Fatality Plan, specific to the Earthquake scenario. The assumptions are used to enhance the scenario description and provide a basis for the discussion]



MASS FATALITY ASSUMPTIONS – CBRNE SCENARIO

[Enter the assumptions identified in your Mass Fatality Plan, specific to the CBRNE scenario. The assumptions are used to enhance the scenario description and provide a basis for the discussion]



MASS FATALITY ASSUMPTIONS – INFLUENZA PANDEMIC SCENARIO

[Enter the assumptions identified in your Mass Fatality Plan, specific to the Influenza Pandemic scenario. The assumptions are used to enhance the scenario description and provide a basis for the discussion]





MODULE 2: OBJECTIVES 1 TO 4

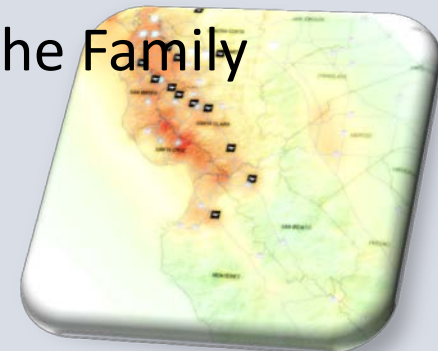
[Jurisdiction
Logo (insert on
slide master)]

OBJECTIVE 1: ROLES AND RESPONSIBILITIES

Discussion Time: Approximately 20 Minutes

Evaluate the roles and responsibilities identified in the Plan and verify that the list is accurate and inclusive of all agencies relevant to the Plan.

- **Discussion Point 1:** Consider the Plan's consistency with the overarching **City or Operational Area** emergency management plans (e.g., Emergency Operations Plan).
- **Discussion Point 2:** Ensuring rapid recovery of human remains
- **Discussion Point 3:** Establishing and managing the Family Assistance Center



OBJECTIVE 2: COORDINATION AND COMMUNICATION

Discussion Time: Approximately 20 Minutes

Evaluate the methods described for coordination and communication among local, State, and Federal government agencies.

- **Discussion Point 1:** Meeting coordination and information needs through the Operational Area Coroner/Medical Examiner Conference Call
- **Discussion Point 2:** Using the Critical Information List. **Note:** the Critical Information List is an appendix to the Plan. The following questions refer to that appendix.



OBJECTIVE 3: INTEGRATION OF RESOURCES

Discussion Time: Approximately 15 Minutes

Evaluate the process described in the Plan for integrating local, State, and Federal resources into the area.

- **Discussion Point 1:** Ensuring effective integration across the multiple levels of government

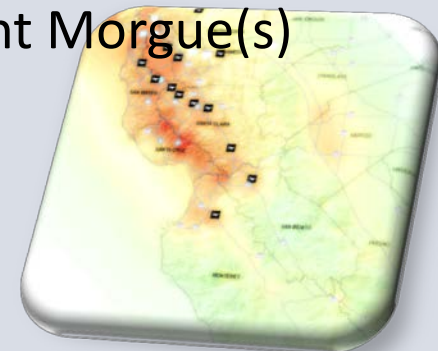


OBJECTIVE 4: OPERATIONS

Discussion Time: Approximately 35 Minutes

Evaluate that the operations section of the Plan is effective at accurately describing all the critical issues relevant to the Plan.

- **Discussion Point 1:** Considering operational priorities and response objectives
- **Discussion Point 2:** Determining the best approach for scene evaluation and organization for managing human remains
- **Discussion Point 3:** Recovering human remains
- **Discussion Point 4:** Conducting morgue operations
- **Discussion Point 5:** Considering the Regional Incident Morgue(s) Concept and operations
- **Discussion Point 6:** Conducting death registration





BEGIN WORKING LUNCH 30 MINUTES

[Jurisdiction
Logo (insert on
slide master)]



MODULE 3: OBJECTIVE 5

[Jurisdiction
Logo (insert on
slide master)]

OBJECTIVE 5: CBRNE

Discussion Time: Approximately 60 Minutes

Evaluate the roles and responsibilities as well as operations related to the CBRNE scenario.

- **Discussion Point 1:** Determining jurisdiction
- **Discussion Point 2:** Decontaminating human remains
- **Discussion Point 3:** Considering operational priorities and response objectives





MODULE 4: OBJECTIVE 6

[Jurisdiction
Logo (insert on
slide master)]

OBJECTIVE 6: INFLUENZA PANDEMIC

Discussion Time: Approximately 60 Minutes

Evaluate the roles and responsibilities as well as operations related to the influenza pandemic scenario.

- **Discussion Point 1:** Considering the Influenza Pandemic appendix's consistency with the [City or Operational Area's](#) overarching emergency management plans.
- **Discussion Point 2:** Determining the jurisdiction of influenza pandemic-related deaths
- **Discussion Point 3:** Processing at-home deaths during an influenza pandemic
- **Discussion Point 4:** Coordinating acceptance and application of select altered standards of death care
- **Discussion Point 5:** Staffing and managing the virtual Family Assistance Center





MODULE 5: REVIEW AND FINDINGS

[Jurisdiction
Logo (insert on
slide master)]

REVIEW AND FINDINGS

- Reviewed Concepts
- Strengths
- Identified Gaps or Areas for Improvement



NEXT STEPS

- Complete Participant Feedback Forms
- [Next steps may include: the development of an After Action Report, an After Action Meeting, additional workshops or working groups, and revisions to the Plan]





THANK YOU!

Please leave your completed Participant Feedback Forms on the tables.

PROJECT POINTS OF CONTACT

[Agency Name]

[Name of Contact]

[Title/Position]

[Phone Number]

[Email]

[Agency Name]

[Name of Contact]

[Title/Position]

[Phone Number]

[Email]

[Jurisdiction
Logo (insert on
slide master)]