

[JURISDICTION] CATASTROPHIC EARTHQUAKE MASS CARE & SHELTERING PLAN



**MASS CARE & SHELTERING/
INTERIM HOUSING**

[Insert
Jurisdiction
Logo]

Workshop Manual

[Date]

This Workshop Manual provides participants with background information and discussion items to be used during the workshop. This Workshop Manual is intended to be used together with [Jurisdiction] Catastrophic Earthquake Mass Care and Sheltering Plan. All workshop participants may view the Workshop Manual.

This page intentionally left blank

How to use this template

This document is a template to assist Emergency Management staff in facilitating a Discussion-Based Workshop (Workshop) to familiarize their jurisdiction's agencies with their local government Catastrophic Earthquake Mass Care and Sheltering Plan (MCS Plan). To help achieve the objectives involved in a coordinated Emergency Operations Center (EOC) care and shelter response, a Workshop can be used to validate and confirm the various roles and responsibilities defined in the MCS Plan. Notes taken during the Workshop can provide recommendations of updates to the plan and of future planning efforts.

To coordinate a Workshop, a jurisdiction should:

- Identify the stakeholders (agencies with a role or responsibility) in the MCS Plan
- For mass care and shelter, invitations should be considered for representatives from:

GENERAL CARE AND SHELTER

- Health and Human Services
- Animal Services
- Local school districts
- American Red Cross
- Public Works
- Nongovernmental organizations and faith-based organizations (including those that support a local Emergency Volunteer Center)

INTERIM HOUSING

- Social Services
- Planning Department
- American Red Cross

- Establish a good date for the Workshop and coordinate stakeholder invitations
- Revise the Workshop Template materials with jurisdiction specific information
- Provide, at minimum, a Workshop facilitator and scribe (for discussion notes)

Upon completion of the Workshop, a jurisdiction should:

- Develop an After Action Report/Workshop Summary Report that captures observations made during the workshop and identifies recommendations for future action and follow up
 - When possible, identify a timeline for addressing each recommendation
- Revise the MCS Plan based upon the Workshop discussions and After Action Report/Summary Workshop Report
- Exercise the plan through a Tabletop Exercise, Functional Exercise or Full-Scale Exercise
- Adopt the MCS Plan per the jurisdiction's protocols

The blue font in this Workshop Manual Template represents either instructional language providing guidance to the Manual developer, or blanks for where tailored information should

be entered. Words or phrases in black font target information that may be left unmodified; however, any sections, phrases or words in this template can be revised as needed by the jurisdiction.

Administrative Handling Instructions

1. The title of this document is the *[Jurisdiction] Catastrophic Earthquake Mass Care and Sheltering Plan Workshop Manual*.
2. This document should be safeguarded, handled, transmitted, and stored in accordance with appropriate security directives. **Note: This Instruction should be tailored to fit the requirements of the jurisdiction.**
3. For more information on this workshop, please use the following points of contact:

[Agency Name]
[Name of Contact]
[Title/Position]
[Street Address]
[City, CA, Zip Code]
[XXX-XXX-XXXX]
[Email Address]

[Agency Name]
[Name of Contact]
[Title/Position]
[Street Address]
[City, CA, Zip Code]
[XXX XXX-XXXX]
[Email Address]

This page intentionally left blank

Table of Contents

Acronymsvi

[Please refresh the Table of Contents before printing]

Workshop Agenda – **[Enter Date(s) of Workshop]**.....1

Introduction.....3
 Workshop Purpose3
 Workshop Scope3
 Workshop Objectives3
 Workshop Process and Structure4
 Workshop Guidelines.....5

Module 1: Overview of the **[Jurisdiction] Catastrophic Earthquake Mass Care and
Sheltering Plan7**
 Plan Overview.....7
 Scenario.....8
 Mass Care and Sheltering Assumptions16

Module 2: Objectives 1 and 220
 Objective 1: Agency Roles and Responsibilities20
 Objective 2: Coordination and Communication.....20

Module 3: Objective 3 and 424
 Objective 3: Resolution of Conflicts and Shortages24
 Objective 4: Operations24

Module 4: Review and Findings.....29
 1: Reviewed Concepts29
 2: Strengths.....29
 3: Identified Gaps or Areas for Improvement.....30
 4: Next Steps.....30

Appendix A: Mapsi
 Map 1. Number of people seeking shelter by census tract1
 Map 2. Shelter locations in the 12-county Bay Area region2
 Map 3. Completely and extensively damaged buildings3
 Map 4. Number of people seeking shelter by census tract4

Acronyms

Use this section to define any additional acronyms used in the manual. Below is a list of examples.

Cal OES	California Governor's Office of Emergency Services
E	Event (occurrence of the scenario disaster)
EOC	Emergency Operations Center
FBO	faith-based organization
FEMA	Federal Emergency Management Agency
HAZUS.....	Hazards U.S. (modeling software used to project damage from a given event)
M	moment magnitude
MCS Plan	Mass Care and Sheltering Plan
MM.....	Modified Mercalli
NGO	non-governmental organization
Plan	[Jurisdiction] Catastrophic Earthquake Mass Care and Sheltering Plan
RCPGP	Regional Catastrophic Preparedness Grant Program
SEMS.....	Standardized Emergency Management System
UASI.....	Urban Areas Security Initiative
Workshop.....	Discussion-Based Workshop

Workshop Agenda – [Enter Date(s) of Workshop]

Note: The times in the schedule below are included as an example. Start times and the length of discussion for each Module can be adjusted to fit the needs of the jurisdiction

9:00 a.m. Registration

9:30 a.m. Introduction

- Introductions
- Housekeeping/Logistics
- Workshop Overview

10:00 a.m. Module 1: Overview of the [Jurisdiction] Catastrophic Earthquake Mass Care and Sheltering Plan

- Plan Overview
- Scenario
- Mass Care and Sheltering Assumptions

10:30 a.m. Module 2: Objectives 1 and 2

- Objective 1: Agency Roles and Responsibilities
- Objective 2: Coordination and Communication

11:30 a.m. Working Lunch

Note: Having a “working lunch” is optional.

12:00 p.m. Module 3: Objectives 3 and 4

- Objective 3: Resolution of Conflicts and Shortages
- Objective 4: Operations

1:00 p.m. Module 4: Review and Findings

- Reviewed Concepts
- Strengths
- Identified Gaps or Areas of Improvement
- Next Steps

1:30 p.m. Participant Feedback

This page intentionally left blank

Introduction

Workshop Purpose

The Bay Area Urban Areas Security Initiative (UASI) has implemented Regional Catastrophic Preparedness Grant Program (RCPGP) funds to develop plans in the following functional areas: Mass Fatality, Debris Removal, Mass Care and Sheltering, Mass Transportation/ Evacuation, Interim Housing, Volunteer Management, Donations Management and Logistics. For each functional area a Regional Plan has been developed, as well as Operational Area plans for the 12 Bay Area UASI region counties and local government plans for two core cities (jurisdictions include Alameda, Contra Costa, Marin, Monterey, Napa, San Benito, San Francisco, San Mateo, Santa Clara, Santa Cruz, Solano, and Sonoma counties and the cities of Oakland and San Jose).

This workshop serves to conduct a systematic review of the [Jurisdiction] Catastrophic Earthquake Mass Care and Sheltering Plan (Plan).

The workshop has three purposes:

1. To familiarize workshop participants with critical elements discussed in the Plan
2. To review and/or evaluate critical elements and concepts presented in the Plan
3. To identify gaps and areas for improvement for Plan revisions and future planning efforts

Workshop Scope

Note: the following scope is here as an example and can be edited by the jurisdiction to reduce or expand the scope of the workshop.

The scope of this workshop includes an evaluation of the assumptions, roles and responsibilities, coordination and communication, and operations described in the Plan. The workshop will be based on a response to the scenario event: a moment magnitude (**M**) 7.9 earthquake on the northern segment of the San Andreas fault. The workshop will not unfold chronologically; rather, it will examine key operational concepts for both Mass Care and Sheltering and Interim Housing and build from them to satisfy the Workshop Objectives.

Workshop Objectives

The objectives of this workshop are to accomplish the following through participant inputs and discussion:

1. Evaluate the roles and responsibilities of critical agencies identified in the Plan.
2. Evaluate the methods described for coordination and communication among local, State, and Federal government agencies, including field-level incident

management; and nongovernmental and faith-based organizations (NGOs and FBOs).

3. Evaluate that the Plan addresses conflicts or shortages in shelter space or resource availability.
4. Evaluate that the operations section of the Plan is effective at accurately describing all the critical issues relevant to the Plan.

Workshop Process and Structure

This workshop will be an interactive, facilitated discussion, organized by Modules, and aimed at evaluating key elements of the Plan. The workshop modules will not be presented chronologically to mirror the scenario event; rather they will support objectives that were formulated to verify accuracy and consistency of the Plan and the operational elements necessary to carry out mass care and sheltering in the Jurisdiction.

[Insert a description of how the workshop will be facilitated. If you plan to use break-out sessions and/or facilitators for different tables, describe that here. Example text follows].

Participants will be grouped according to Emergency Operations Center (EOC) Sections (the section in which they are or would most likely be assigned to) and will engage in a facilitated discussion about critical elements of each plan. After these smaller group discussions, participants will engage in a moderated plenary discussion in which a spokesperson from each group will present a synopsis of the group's observations/discoveries based on the scenario.

OR

The workshop discussion will occur as a plenary session. A facilitator will guide the group in a discussion about critical elements of the plan.

[The structure of the workshop can be changed based on how the facilitation team determines it will be best to achieve the objectives for the workshop. The structure below is one example].

The workshop structure is designed to support a systematic review of the Plan by the participants, who are mass care and sheltering subject matter experts, as they analyze the Plan and provide recommended revisions.

- **Module 1:** [Jurisdiction] Catastrophic Earthquake Mass Care and Sheltering Plan Overview
- **Module 2:** Objectives 1 and 2 (Agency Roles and Responsibilities, and Coordination and Communication)
- **Module 3:** Objectives 3 and 4 (Resolution of Conflicts and Shortages, and Operations)
- **Module 4:** Review and Findings

Participants will be introduced to Objectives and Discussion Points that support those objectives. They will be asked to respond to facilitated questions and provide comments on Plan content when issues arise. The workshop will conclude with a summary of observations, strengths, identified gaps or areas for improvement, and next steps.

Workshop Guidelines

The following guidelines apply during the workshop: **Note: these guidelines can be modified by the jurisdiction. For example, if a jurisdiction wants to evaluate the assumptions derived from the HAZUS analysis, they can do so.**

- The primary goal of the workshop forum is to ensure that the coordination, resource-requesting and decision-making processes are accurately described.
- Emphasis for this workshop is on identifying potential inaccuracies or gaps and resolving them using facilitated discussion among stakeholders.
- Issue identification is not as valuable as suggestions and recommended actions that could improve response and preparedness efforts. Developing solutions should be the focus of participants.
- The ability to evaluate the content of the plan depends on thoughtful input from participants.
- Participants are encouraged to participate based on their knowledge of existing plans, capabilities, and insights as well as from their review of the Plan.
- Decisions are not precedent-setting and may not reflect the final position of individual participants' organization on a given issue. The workshop is an opportunity to present and discuss multiple options and possible solutions.
- During the response, cooperation and support from other responders and agencies is assumed.
- The scenario, objectives, and assumptions serve as the basis for discussion.
- The workshop is designed to evaluate elements in the Plan, not the scenario or the Hazards U.S. (HAZUS) software estimates used to develop some of the assumptions.

This page intentionally left blank

Module 1: Overview of the [Jurisdiction] Catastrophic Earthquake Mass Care and Sheltering Plan

Plan Overview

The Plan describes [Jurisdiction] mass care and sheltering operations in response to the earthquake. The term “mass care and sheltering,” as used in this Plan, refers to the provision of temporary shelter for people displaced from their residences. A more general definition of “mass care” includes other services, such as mass feeding sites and provision of bulk food, water, clothes, and other relief supplies that may be provided at places other than shelters.

The following issues related to mass care and sheltering are addressed by the Plan:

- Providing care and sheltering for people who have been displaced by the earthquake
- Supporting mass care for evacuation points in the Jurisdiction
- Providing care and sheltering for people with access and functional needs

The Plan briefly describes the following mass care and sheltering operations:

- Mass feeding
- Addressing the needs of people with critical medical conditions when they present themselves at shelters
- Distributing supplies and packaged goods to people outside of shelters
- Providing care for pets and service animals when people with companion animals present themselves at shelters
- Moving inmate populations out of correctional facilities that have been damaged by the earthquake

The Plan includes the following appendices: **Note: In the section below provide a description for how the Plan is structured. The description here is an example and may not represent exactly how your jurisdiction’s plan is organized.**

Mass Care and Sheltering:

- **Appendix A:** A glossary of acronyms, abbreviations, and key terms
- **Appendix B:** Maps
- **Appendix C:** Summaries of relevant State and Federal plans, guidance documents, and regulations
- **Appendix D:** Details on the methods used to generate the earthquake-specific assumptions and planning figures

- **Appendix E:** Assumptions for estimating the shelter demand for people with access and functional needs
- **Appendix F:** Descriptions of the State agencies with secondary or supporting roles in mass care and sheltering
- **Appendix G:** Resources provided by Voluntary Organizations Active in Disaster
- **Appendix H:** Resources related to mass care and sheltering

Interim Housing:

- **Appendix A:** A glossary of acronyms, abbreviations, and key terms
- **Appendix B:** Maps
- **Appendix C:** Summaries of relevant State and Federal plans
- **Appendix D:** Details on the methods used to generate assumptions and figures
- **Appendix E:** Background information about interim housing
- **Appendix F:** Resources provided by Voluntary Organizations Active in Disaster
- **Appendix G:** Example of a State-Led Housing Task Force housing plan
- **Appendix H:** Response timeline for interim housing operations

The sections below provide the specific impacts associated with the scenario event, and the assumptions made about the mass care and sheltering response based on the scenario.

Scenario

The scenario event is an **M 7.9** earthquake on the northern segment of the San Andreas fault. The basis for the scenario is a HAZUS analysis¹ performed by the Earthquake Engineering Research Institute, with support from the U.S. Geological Survey and the California Governor's Office of Emergency Services (Cal OES), beginning in 2005 and modified in 2009 by URS Corporation for the RCPGP.

Note: the scenario impacts listed below are from the Regional Plan. Your jurisdiction may wish to use the local impacts for your jurisdiction in lieu of these. The most important impact to include here would be the number of people seeking shelter in the Jurisdiction. Keep in mind, that awareness of the impacts of neighboring jurisdictions is useful in understanding the full context of the scenario event.

¹ HAZUS is a loss estimation software program that was developed by the National Institute of Building Sciences (NIBS) for FEMA. The version used for this analysis (HAZUS MR3) was developed by NIBS in 2003.

and Sheltering Plan – Workshop Manual

Some of the initial impacts, to the region, of the earthquake scenario projected by HAZUS analysis are (the following tables are from the Regional Catastrophic Earthquake Mass Care and Sheltering Plan, tables that provide information for just your jurisdiction and the region as a whole, can be found in your jurisdiction specific plan should you prefer to use those):

Table 1. Estimated number of displaced people who seek shelter, by county and for Oakland and San Jose (MCS Plan Table 2-10).

County/City	2009 Population	Displaced Households	Displaced People ¹	Seeking Shelter
Alameda	1,556,500	95,400	257,600	67,300
Contra Costa	1,060,400	17,500	47,200	12,800
Marin	258,600	8,000	21,600	4,900
Monterey	431,900	2,300	6,300	2,300
Napa	137,600	3,500	9,300	2,400
San Benito	58,000	300	900	300
San Francisco	845,600	116,800	315,300	64,500
San Mateo	745,900	41,700	112,600	26,000
Santa Clara	1,857,600	97,300	262,600	64,700
Santa Cruz	268,600	3,600	9,800	2,900
Solano	426,300	3,400	9,200	2,600
Sonoma	486,600	14,500	39,200	9,400
Regional totals	8,133,600	404,300	1,091,600	260,100
Homeless/Visitors (see Tables 2-6 and 2-9)				71,300
Regional Total Seeking Shelter				331,400
Oakland	425,000	36,100	97,500	29,000
San Jose	1,006,700	52,900	142,800	39,900
City totals	1,431,700	99,000	329,300	69,900

Source: HAZUS analysis conducted by URS (2009) and county sources (2007 to 2009)

¹ Number of displaced people based on 1 household = 2.7 people
HAZUS = Hazards U.S.

Table 2. Number of households without potable water after the scenario earthquake (MCS Plan Table 2-1).

County	Total Households	Households without Potable Water Post-Earthquake			
		E+24 Hours	E+72 Hours	E+7 Days	E+30 Days
Alameda	564,200	465,000	459,800	448,200	341,800
Contra Costa	384,600	105,700	85,700	45,600	N/A
Marin	105,300	56,300	48,600	29,300	N/A
Monterey	130,300	N/A	N/A	N/A	N/A
Napa	50,300	3,900	<100	0	0
San Benito	17,300	N/A	N/A	N/A	N/A
San Francisco	358,900	340,100	336,400	326,100	N/A
San Mateo	268,000	236,900	234,300	228,100	149,700
Santa Clara	624,700	516,800	512,300	502,700	423,100
Santa Cruz	95,800	16,100	6,500	<100	<100
Solano	140,900	12,500	3,700	<100	<100
Sonoma	182,900	87,800	81,900	69,100	<100
Total	2,923,200	1,841,100	1,769,200	1,649,400	914,900

Source: HAZUS analysis conducted by URS in 2009. The estimates were adjusted, by county, for population increases since 2000.

E = scenario event

N/A = Not available (HAZUS results are unreliable)

Table 3. Number of households without electricity after the scenario earthquake (MCS Plan Table 2-2).

County	Total Households	Households without Electricity Post-Earthquake			
		E+24 Hours	E+72 Hours	E+7 Days	E+30 Days
Alameda	564,200	23,600	13,700	5,400	1,200
Contra Costa	384,600	15,400	9,300	3,700	800
Marin	105,300	3,700	2,400	1,100	200
Monterey	130,300	N/A	N/A	N/A	N/A
Napa	50,300	2,000	1,200	500	100
San Benito	17,300	N/A	N/A	N/A	N/A
San Francisco	358,900	253,900	161,300	73,100	18,300
San Mateo	268,000	100,100	62,800	27,900	6,800
Santa Clara	624,700	57,100	34,300	14,400	3,400
Santa Cruz	95,800	15,500	9,600	3,900	800
Solano	140,900	5,600	3,200	1,400	300
Sonoma	182,900	60,000	40,400	19,700	5,000
Total	2,923,200	536,900	338,200	151,100	36,900

Source: HAZUS analysis conducted by URS in 2009. The estimates are adjusted, by county, for population increase since the year 2000. For Contra Costa, Napa, and Solano counties, the power loss is not accurately represented in HAZUS and is an average of losses for Alameda and Marin counties. HAZUS does not provide reliable results for Monterey and San Benito counties, but it can be assumed that there will be some power loss in these counties.

E = scenario event

N/A = Not available (HAZUS results are unreliable)

Table 4. Estimated pre- and post-earthquake capacities (in number of spaces for sleeping) of NSS-designated primary shelters in the region by county (MCS Table 2-12).

County	Number of Shelter Spaces ¹		Percent Post-Earthquake
	Pre-Earthquake	Post-Earthquake	
Alameda	18,700	4,100	21.9%
Contra Costa	3,100	2,600	83.9%
Marin	5,900	400	6.8%
Monterey	10,300	5,300	51.5%
Napa	2,100	600	28.6%
San Benito	100	0	0.0%
San Francisco	30,700	0	0.0%
San Mateo	15,200	0	0.0%
Santa Clara	25,000	800	3.2%
Santa Cruz	23,600	0	0.0%
Solano	7,800	5,400	69.2%
Sonoma	24,000	0	0.0%
Regional total	166,500	19,200	11.5%

Source: National Shelter System database (2008) and HAZUS analysis (2009)

¹ Shelter space = 40 square feet per person

Table 5. Estimated number of households in the region that will need interim housing 1 month after the earthquake (Interim Housing Plan Table 2-3).

Number of Households in the Region Needing Interim Housing	
County	E+1 Month
Alameda	95,400
Contra Costa	17,500
Marin	8,000
Monterey	2,300
Napa	3,500
San Benito	300
San Francisco	116,800
San Mateo	41,700
Santa Clara	97,300
Santa Cruz	3,600
Solano	3,400
Sonoma	14,600
Total	404,200

Source: URS analysis of HAZUS damage estimates
E = scenario event

Table 6. Estimated number of displaced household pets in the region expected to need shelter (MCS Plan 2-13).

Assumption	Households	Animals
Number of displaced households	404,300	N/A
60% of households have animals	N/A	242,600
50% of households with animals have two or more animals	N/A	121,300
Total displaced animals	N/A	363,900
Displaced animals brought to shelters or evacuated with owners (estimated 60% of total displaced animals)	N/A	218,300

Source: CONPLAN with data updated to 2009.
N/A = Not applicable

Table 7. Number of facilities, space capacity, estimated populations, and occupancy rates in county and State correctional facilities as of 2009 (MCS Plan 2-14).

County/ State	County	Number of Facilities	Total Space Capacity	Estimated Population	Occupancy Rate
County	Alameda	2	4,800	4,400	92%
	Contra Costa	5	2,300	1,700	75%
	Marin	1	400	300	79%
	Monterey	1	1,200	1,200	100%
	Napa	1	264	N/A	N/A
	San Francisco	5	2,200	2,200	100%
	San Mateo	2	1,100	1,100	100%
	Solano	2	1,100	1,100	100%
	Sonoma	3	1,600	1,100	67%
	Santa Clara	5	6,000	4,700	77%
	Santa Cruz	4	400	400	100%
	San Benito	2	200	100	50%
State (county location of facility)	Marin	1	3,300	5,200	159%
	Monterey	2	5,500	11,600	209%
	Solano	2	5,900	9,100	154%

Source: County and State departments of corrections

N/A = Not available

Table 8. Number of people with access and functional needs in the region expected to seek shelter after the scenario earthquake, by county and for Oakland and San Jose (MCS Plan 2-7).

Access/Functional Need Subgroup	Age in years	COUNTY												CITY ³		
		Alameda	Contra Costa	Marin	Monterey	Napa	San Benito	San Francisco	San Mateo	Santa Clara	Santa Cruz	Solano	Sonoma	Regional Total	Oakland	San Jose
Sensory disability	All	1,800	400	100	100	100	<100	2,100	600	1,500	100	100	300	7,200	900	900
Physical/mental/self-care disability	5 to 15	500	100	<100	<100	<100	<100	300	200	400	20	<100	100	1,700	200	300
	16 to 64	4,600	800	300	200	200	<100	4,700	1,200	3,100	200	200	700	16,100	2,700	2,200
	>65	3,500	700	200	100	200	<100	4,900	1,200	2,700	100	100	500	14,200	1,900	1,600
Employment disability	16 to 64	5,500	900	300	200	200	<100	5,700	1,900	5,000	200	200	700	20,800	2,900	3,700
Go-outside-home disability ¹	16 to 64	3,300	500	200	100	100	<100	3,500	1,100	3,000	100	100	300	12,300	1,900	2,400
	>65	1,500	300	100	<100	100	<100	2,100	600	1,200	100	100	200	6,200	800	700
Inter-county commuters ²	—	8,900	1,000	800	<100	300	<100	20,900	5,000	7,300	100	100	200	44,600	N/A	N/A
Households without vehicle	—	2,100	200	100	100	100	<100	7,300	500	1,000	100	100	200	11,600	1,700	600

Source: URS analysis of U.S. census data, California Health Interview Survey, and data from the California Department of Finance and local chambers of commerce (2009); results rounded to the nearest hundred.

— = Not applicable

N/A = Not available

¹ Person who needs support outside the home.

² Commuters in a county jurisdiction on a typical day but who reside in a different county and thus need transportation.

³ Estimates for Oakland and San Jose are included in the regional totals for Alameda County and Santa Clara County, respectively.

The characteristics of the scenario event and its impacts on the region are as follows:

1. The earthquake occurs in January on a weekday at 1400 hours Pacific Standard Time.
2. A foreshock precedes the main shock by 20 to 25 seconds. There is no other warning.
3. The main shock lasts 45 to 60 seconds.
4. The epicenter is just outside the entrance to the San Francisco Bay, west of the Golden Gate Bridge.
5. The earthquake ruptures approximately 300 miles of the northern segment of the San Andreas fault, from the San Juan Bautista area in the south to Cape Mendocino in the north.
6. Shaking is felt in Oregon to the north, Los Angeles to the south, and Nevada to the east.
7. The estimated magnitude is **M 7.9** with Modified Mercalli (MM) intensity of VIII (severe shaking/moderate to heavy damage) to IX (violent shaking/heavy damage) in widespread areas of the most severely affected counties. Pockets in the affected counties experience instrument intensity of MM X (extreme shaking/very heavy damage), particularly areas immediately adjacent to the fault and areas where liquefaction is likely to occur.
8. Ground shaking and damage occur in 19 California counties, from Monterey County in the south to Humboldt County in the north and into the San Joaquin Valley to the east.
9. Damage is catastrophic in the areas that experience shaking intensities of MM IX and X and in the areas with high or very high levels of susceptibility for liquefaction, which are the areas adjacent to the fault in Marin, San Francisco, San Mateo, Santa Clara, Santa Cruz, and Sonoma counties.
10. Counties along the fault outside the Bay Area, such as Mendocino, may sustain damage and require response.
11. Central Valley counties such as Sacramento and San Joaquin may be affected immediately by evacuations and other response actions.
12. The rest of California and the Nation are affected significantly by the need to respond; the deaths, injuries, and relocations of Bay Area residents; economic disruption; and media attention.
13. Threats and hazards resulting from shaking, surface fault rupture, and liquefaction include:
 - Structural and nonstructural damage to buildings, including widespread collapse of buildings
 - Structural and nonstructural damage to infrastructure
 - Widespread fires

- Subsidence and loss of soil-bearing capacity, particularly in areas of liquefaction
 - Displacement along the San Andreas fault
 - Widespread landslides
 - Hazardous materials spills and incidents
 - Dam/levee failure resulting in flooding
 - Civil disorder
14. Threats and hazards resulting from the main shock are aggravated or recur during aftershocks, which continue for months after the main shock.
15. The earthquake does not generate a tsunami or seiche, despite its magnitude.

Mass Care and Sheltering Assumptions

Note: in this section please enter the assumptions identified in your Jurisdiction's Mass Care and Sheltering Plan. The assumptions are used to enhance the scenario description and provide a basis for the discussion.

Notes

This page intentionally left blank

Module 2: Objectives 1 and 2

Objective 1: Agency Roles and Responsibilities

Objective 1 is to evaluate the roles and responsibilities of critical agencies identified in Section 3 of the Plan.

Discussion Point 1: Evaluate the accuracy of the roles and responsibilities of critical agencies presented in the Plan.

Discussion Point 2: Evaluate the accuracy of the roles and responsibilities for Interim Housing as described in the Plan.

Discussion Point 3: Do the identified agencies know their responsibilities?

Objective 2: Coordination and Communication

Objective 2 is to evaluate the methods described for coordination and communication among local, State, and Federal government agencies, including field-level incident management, NGOs and FBOs.

Discussion Point 1: Identify coordination or communication actions that are outside of the Standardized Emergency Management System (SEMS), if any. Consider how Interim Housing solutions are coordinated.

Discussion Point 2: What outside agencies does the [City or Operational Area](#) expect to coordinate with when addressing care and sheltering issues?

Discussion Point 3: How will the [City or Operational Area](#) communicate with those organizations providing care and shelter services within the [City or Operational Area](#)?

Discussion Point 4: Consider the Critical Information List. [Note: the Critical Information List is an appendix to the Plan. The following facilitation questions refer to that appendix.](#)

Facilitation Questions:

1. Does the list identify all the correct items?
2. Is the information in the list organized in a useful manner?
3. What changes, if any, should be made to the list?

Module 3: Objective 3 and 4

Objective 3: Resolution of Conflicts and Shortages

Objective 3 is to evaluate that the Plan addresses conflicts or shortages in shelter space or resource availability.

Discussion Point 1: Do resources exist in the [City or Operational Area](#) to meet the needs of displaced residents throughout the [City or Operational Area](#)?

Discussion Point 2: How is situational awareness about shelter needs across the [City or Operational Area](#) obtained?

Objective 4: Operations

Objective 4 is to evaluate that the operations section of the Plan is effective at accurately describing all the critical issues relevant to the Plan.

Discussion Point 1: Considering operational priorities and response objectives.

Facilitation Questions:

1. Do the operational priorities and response objectives accurately describe all the critical issues relevant to mass care and sheltering response operations?
2. Are there gaps?
3. Are the operational priorities and response objectives listed under the appropriate time-based phase (e.g., Event occurrence (E) to E+72hours)?

Notes

Notes

This page intentionally left blank

Module 4: Review and Findings

1: Reviewed Concepts

Review the critical concepts that were evaluated during the workshop discussion.

2: Strengths

Identify any strengths that were discovered during the workshop.

3: Identified Gaps or Areas for Improvement

Review gaps or areas for improvement in the Plan that were identified during the workshop discussion.

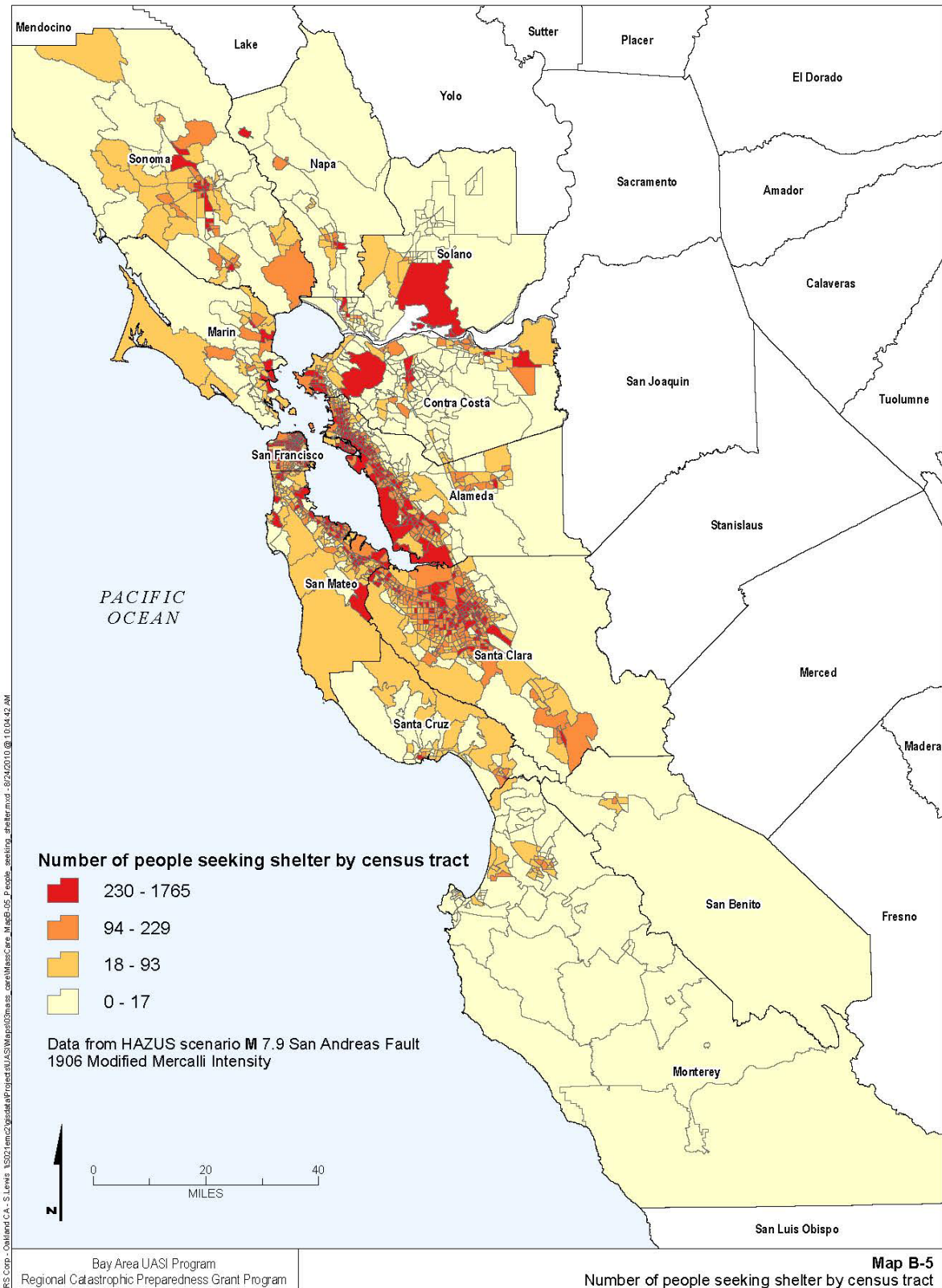
4: Next Steps

Note: following the workshop, the Jurisdiction should consider next steps for inclusion in the manual. Next steps may include: the development of an After Action Report/Workshop Summary Report, an After Action Meeting, additional workshops or working groups, and revisions to the Plan. Use this section to detail these next steps.

Appendix A: Maps

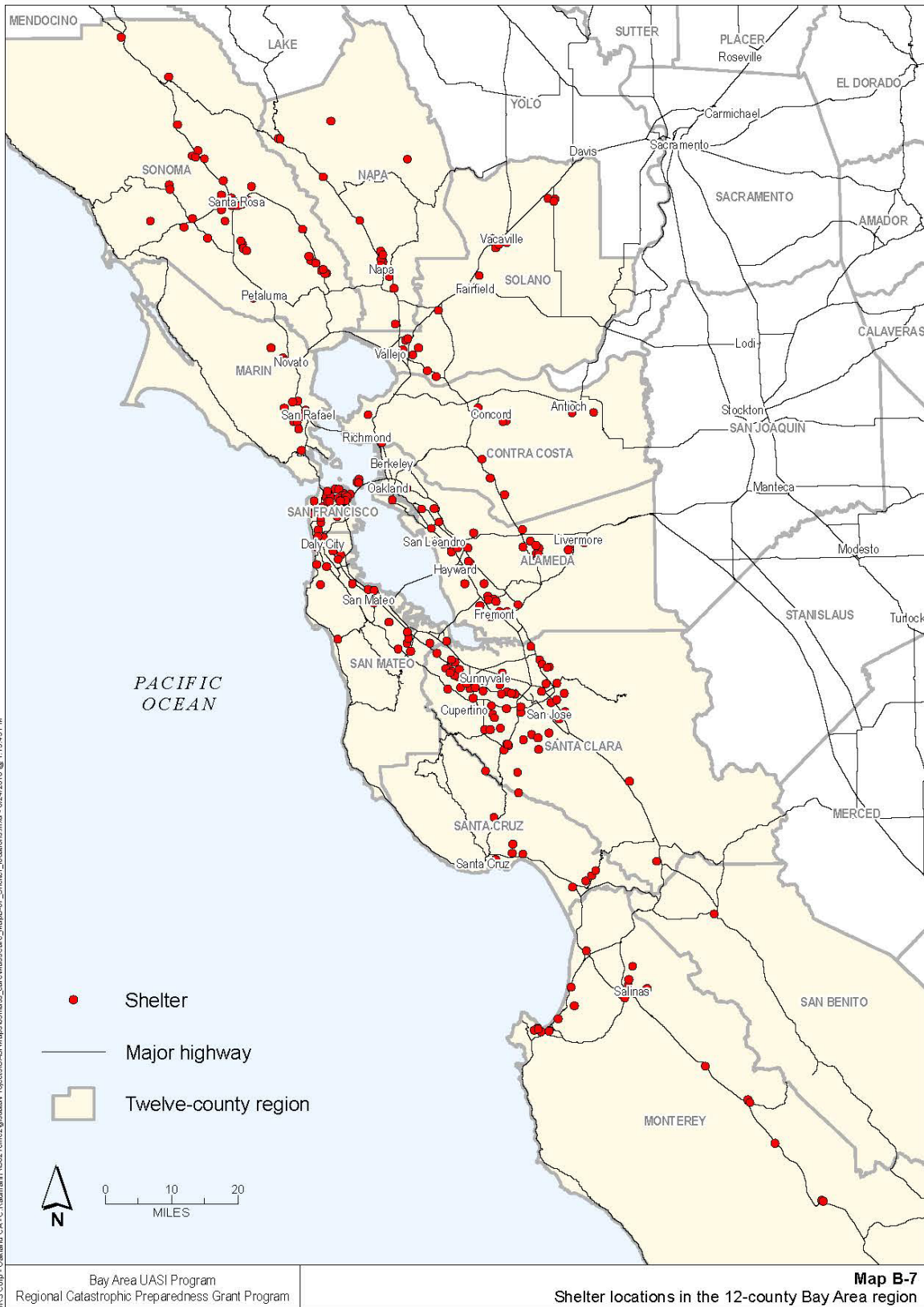
This page intentionally left blank

Map 1. Number of people seeking shelter by census tract
 (from the Regional Catastrophic Earthquake Mass Care and Sheltering Plan)

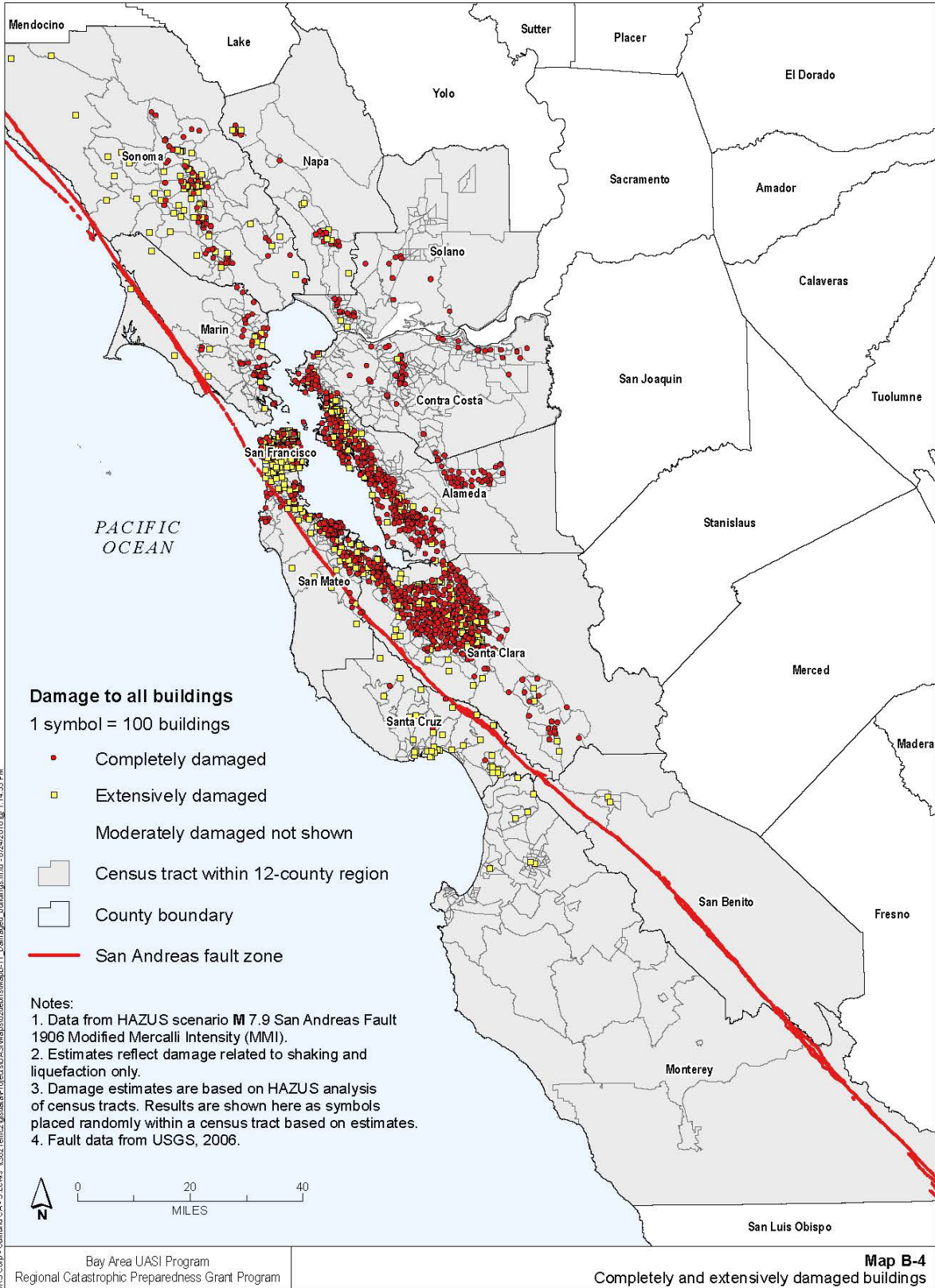


Map 2. Shelter locations in the 12-county Bay Area region

(from the Regional Catastrophic Earthquake Mass Care and Sheltering Plan – localized map can be found in your Jurisdiction’s Mass Care and Sheltering Plan)



Map 3. Completely and extensively damaged buildings
 (from the Regional Catastrophic Earthquake Mass Care and Sheltering Plan)



Map 4. Number of people seeking shelter by census tract
(from the Regional Catastrophic Earthquake Mass Care and Sheltering Plan)

